

TOURIST
GUIDE



LAND OF ARLON

FULL
STORIES
TO DISCOVER





Welcome to the LAND OF ARLON

This practical guide is bursting with good ideas for visiting the Land of Arlon (Pays d’Arlon), set in the Province of Luxembourg (Belgium) and on the borders of France and the Grand Duchy of Luxembourg.

This land of exchanges, made up of four communes (Arlon, Attert, Aubange and Messancy), at the crossroads of the French and German cultures, boasts a rich cross-border heritage. Bearing witness to our Gallo-Roman past, the Land of Arlon is crossed by old Roman roads linking imperial cities.

Arelerland - the Luxembourg name for the Land of Arlon - also has its own local drink, the Maitrank, the essential ingredient of which is woodruff.

You can taste it at one of our Ambassadors or make it yourself by following the recipe on page 52 !

PHOTO CREDITS :

Maxime Alexandre (Trekking et Voyages), L. Arosio, Arlon Tourisme, ATLB, Sébastien Cuvelier, Designer Outlet Luxembourg, ftplux, Funny Mountain, Luxfly Skydive, Maison du Tourisme du Pays d’Arlon, A. Merlot, Musée Archéologique d’Arlon, Musée Gaspar, Valérie Peuckert, Johan Poezevara, Shopping Cora, Pascal Willems.

DRAWINGS : Hélène Poncet - Maison du Tourisme du Pays d’Arlon



CONTENTS

| | |
|------|---------------------------------------------|
| P.04 | MEET THE LAND OF ARLON |
| P.10 | SPOT THE MUST SEES |
| P.12 | DISCOVER OUR ATTRACTIONS AND MUSEUMS |
| P.20 | ADMIRE OUR HERITAGE |
| P.28 | DIVE INTO OUR NATURE |
| P.33 | WANDER ON OUR PATHS |
| P.42 | PLAY TO EXPLORE |
| P.44 | VENTURE OUTDOORS |
| P.47 | EXPERIMENT INDOORS |
| P.50 | LIVE THE CULTURE |
| P.52 | TASTE |
| P.57 | GO OUT |
| P.61 | SLEEP |
| P.63 | USEFUL ADDRESSES |

MEET THE LAND OF ARLON

THE 9 TOURIST INFORMATION CENTRES

FAMENNE ARDENNE OURTHE ET LESSE

Place de l'Etang, 15
6900 - Marche-en-Famenne
+32(0)84 34 53 27
www.famenneardenne.be

HAUTE ARDENNE

Avenue de la Salm, 50
6690 - Vielsalm
+32(0)80 21 50 52
www.haute-ardenne.be

CŒUR DE L'ARDENNE AU FIL DE L'OURTHE ET L'AISNE

Place du Marché, 15
6980 - La Roche-en-Ardenne
+32(0)84 36 77 36
www.coeurdardenne.be

PAYS DE BASTOGNE

Place McAuliffe, 60
6600 - Bastogne
+32(0)61 26 76 11
www.paysdebastogne.be

FORÊT DE SAINT-HUBERT

Place du Marché, 15
6870 - Saint-Hubert
+32(0)61 61 30 10
www.foretdesainthubert-tourisme.be

BOUILLON EN ARDENNE

Quai des Saulx, 12
6830 - Bouillon
+32(0)61 46 52 11
www.paysdebouillon.be

CAP SÛRE ANLIER

Grand Place, 2
6840 - Neufchâteau
+32(0)61 21 80 05
www.capsureanlier.be

GAUME

Rue des Grasses Oies, 2B
6760 - Virton
+32(0)63 57 89 04
www.visitgaume.be

PAYS D'ARLON

Rue des Faubourgs, 2
6700 - Arlon
+32(0)63 21 94 54
www.paysdarlon.be

THE PROVINCE OF LUXEMBOURG



Map :
© Ardenne Belge Tourisme, Julie Neven

THE LAND OF ARLON



ARLON

Maison du Tourisme du Pays d'Arlon
Royal Office du Tourisme d'Arlon

Rue des Faubourgs, 2
6700 Arlon
+32(0)63 21 94 54
www.paysdarlon.be

ATTERT

Maison du Parc
Syndicat d'Initiative du Val d'Attert
1st floor

Free exhibition on the Attert Valley Nature Park
(during the office hours)
Voie de la Liberté, 107
6717 Attert
+32(0)63 22 78 55
www.pnva.be
www.attert-tourisme.be

MESSANCY

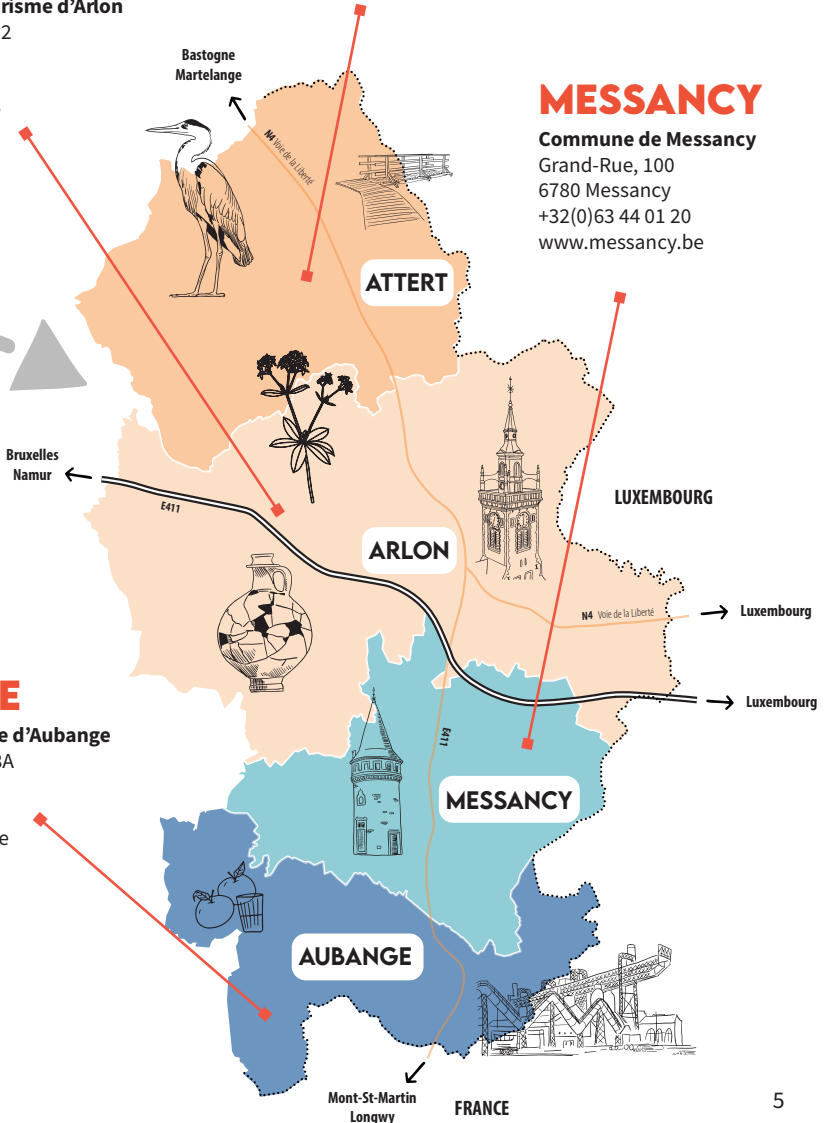
Commune de Messancy

Grand-Rue, 100
6780 Messancy
+32(0)63 44 01 20
www.messancy.be

AUBANGE

Syndicat d'Initiative d'Aubange

Rue de Clémarais, 28A
6790 Aubange
+32(0)63 38 86 54
www.visitaubange.be

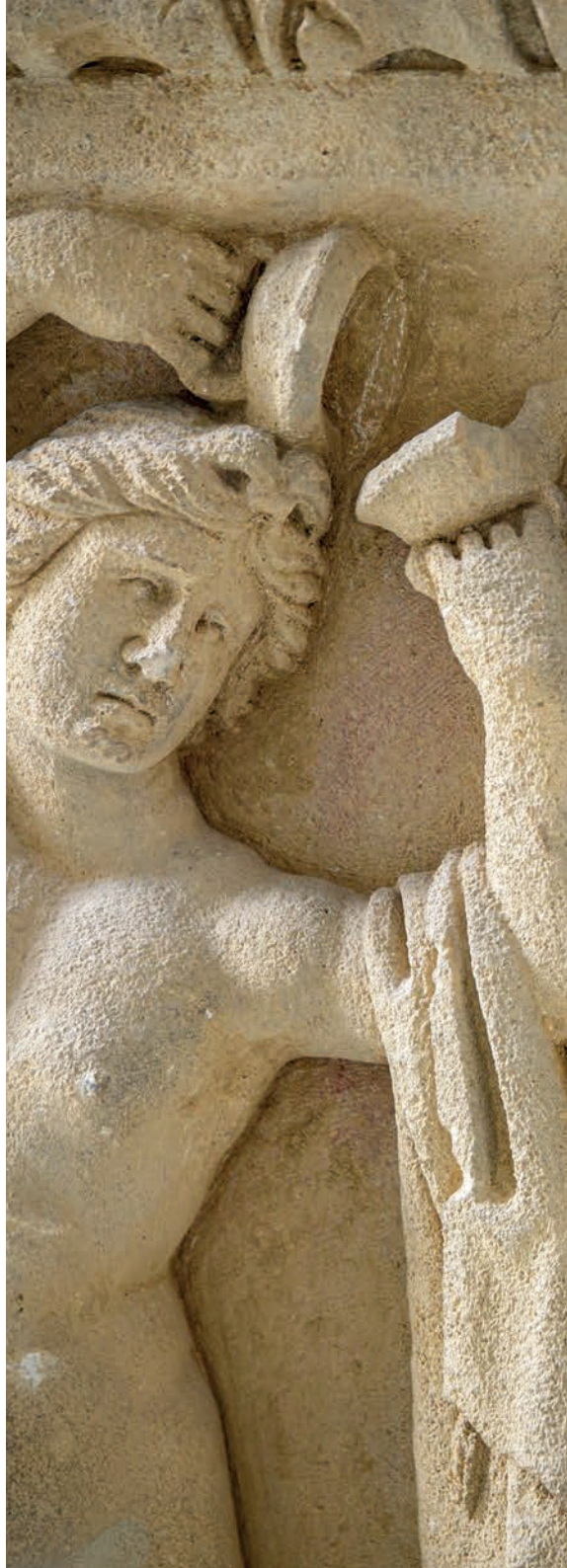


ARLON

**2000 YEARS
OF HISTORY**

Arlon (*Orolaunum* in latin) is one of the three oldest cities of Belgium. It owes this privileged position to its strategic location at the crossroads of two major Roman roads, one leading from Reims to Trier and the other from Metz to Tongeren.

Today, this identity is reflected in the presence of the Archaeological Museum, the discovery of Roman towers (Neptune and Jupiter) and the organisation of a biennial Gallo-Roman weekend.





ATTERT

**GREEN AND
ENERGETIC**

The commune of Attert comprises 17 villages and hamlets that also make up the Attert Valley Nature Park.

Lying halfway between Arlon and Martelange, it occupies a key zone between Anlier Forest in the Ardennes on the one hand and the famous Lorraine cuestas on the other. This is largely responsible for the great wealth of its natural environment.

AUBANGE

MARKED BY

FIRE AND IRON

Set at the heart of the Land of the Three Borders between the Grand Duchy of Luxembourg and France, the Municipality of Aubange forms a link between Gaume and the Land of Arlon.

This municipality, which has a rich industrial past, is made up of seven localities, each of which has its charm. It is the scene of varied landscapes alternating between striking woods, fine tree-filled terraces and little valleys enhanced by green meadows. In addition, it has a built heritage typical of Lorraine.





MESSANCY

SHOPPING AND RELAXATION

Messancy can lay claim to the title of a very old locality. The name is first referenced in an official document, a bull issued by Pope Urban II, in 1096.

Once a rural commune, it came a dormitory commune for the iron and steel plants of Athus, France and the nearby Grand Duchy.

This characteristic was to last for a century, creating a prestigious past reflected in fine, imposing villas.

SPOT THE MUST-SEES



Let our suggestions and favourites guide you through the Land of Arlon! To find out more, just keep reading or come and see us at our various reception centres, which you will find on page 5. We will be delighted to see you.

1

DISCOVER OUR GALLO-ROMAN HERITAGE

2

TASTE THE MAITRANK,

our local aperitif that you can enjoy at one of our Ambassadors

3

ADMIRE THE VIEW FROM THE TOP OF THE BELVEDERE

and the St. Donatus district, with its mound, its old town and more

4

STROLL THROUGH OUR STRIKING VILLAGES

including Nobressart, one of the most beautiful villages of Wallonia, Guirsch and its panoramic view, Rachecourt and its apple festival, and more.

5

VISIT ST. MARTIN'S CHURCH

in the late afternoon when the setting sun pierces its rosette

6

THE CLÉMARAIS ESTATE

is the starting point for lovely walks

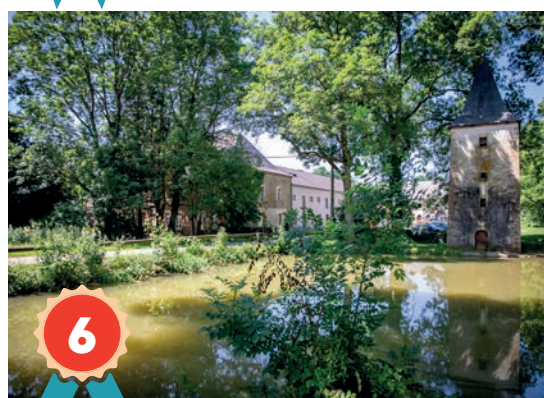
7

ADMIRE THE COUNTRYSIDE

as you walk around Arlon, Attert, Aubange or Messancy.

8

EXPLORE THE SITE OF THE OLD CLAIREFONTAINE ABBEY



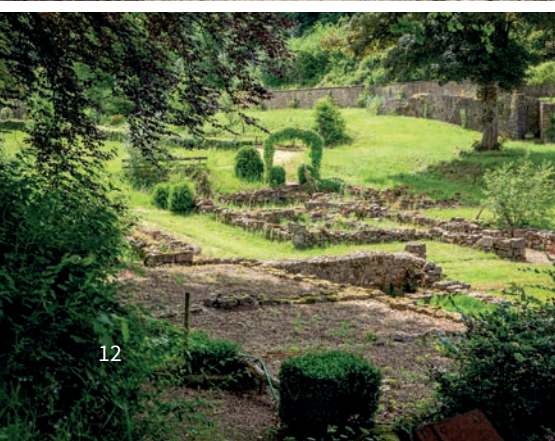
DISCOVER OUR ATTRACTIONS AND MUSEUMS



CLAIREFONTAINE ARCHAEOLOGICAL SITE



Nestling deep in the countryside, here you can visit the ruins of Clairefontaine Abbey in peace and quiet and enjoy the green surroundings. Be sure to visit the little underground passages and make the most of the fine walks near the site.



**Open daily from 8.00 am
to 8.00 pm.**



Rue du Cloître, 66
6700 Arlon



Freely accessible



www.arlon-clairefontaine.be



+32(0)495 23 00 44

GASPAR MUSEUM

The Gaspar Museum is housed in a superb mansion where you can come and meet Jean and Charles Gaspar. These two brothers, one a sculptor, the other a photographer and patron, marked the life of Arlon in the early 20th century.



- Open from Tuesday to Saturday, from 9 am to 12.30 pm and from 1.30 pm to 5.30 pm
- Open on Sundays from 1.30 pm to 5.30 pm.
- Closed on Mondays, on 1/01, 1/11, 11/11 and on 24, 25 and 31 December.



Rue des Martyrs, 16
6700 Arlon



Adults : 6€ Students : 3€
Senior citizens : 4€ Children : 2€
Free admission the 1st Sunday of the month



www.museegaspar.be



+32(0)63 60 06 54





ARCHAEOLOGICAL MUSEUM



Given Arlon's rich Gallo-Roman past, the museum houses an impressive collection bearing witness to daily life in this period and including a superb lapidary gallery! These blocks and objects created by Roman craftsmen will teach you more about the daily life of the time.



• **Open from Tuesday to Saturday, from 9 am to 12.30 pm and from 1.30 pm to 5.30 pm**

• Open on Sundays and on public holidays from 1.30 pm to 5.30 pm.

• Closed on Mondays, on 1/01, 1/11, 11/11 and on 24, 25 and 31 December.



Rue des Martyrs, 13
6700 Arlon



Adults : 6€ Students : 3€
Senior citizens : 4€ Children : 2€
Free admission the 1st Sunday of the month



+32(0)63 23 07 10

THE BELVEDERE



Reach for the sky !

When the weather is fine, the belvedere offers a superb panoramic view over the Arlon region and the three neighbouring countries. Climb its 144 steps and admire this marvellous 360° view, which is definitely worth the effort.



• **Open from 1/5 to 15/9, at weekends, on public holidays and every day in July and August, from 2.00 pm to 6.00 pm**

• Open on the first Sunday of the month, in March, April, October and November.

• Outside these times, upon reservation at the Tourist Office, accompanied by a guide.



Square Élisabeth
6700 Arlon



Adults : 3€
Children : free



Belvédère Arlon



belvedere@arlon.be



+32(0)63 21 63 60



CYCLE MUSEUM

The fascinating world of the cycle in five exhibition rooms.

Over 200 bicycles, advertising plates, period posters, ceramics, tax plates, games and more.



Open by appointment



Rue de Stehnen, 44
6700 Weyler



Adults : 4€ Students : 2,5€
Groups : 3€



www.museeducycle-weyler.be



+32(0)63 21 72 03



MILITARY MUSEUM

Through a rich collection of uniforms, weapons, equipment and various documents, the military museum traces the heroic history of the Infantry, the 'Queen of Battles', from 1830 to the present.



Open by appointment



Quartier Général Bastin
Route de Bouillon, 88
6700 Arlon



Admission free



+32(0)63 21 72 03
+352 691 78 42 74

SCOUTING MUSEUM

DISCOVER our attractions and museums

The museum presents over 100 years of scouting across the world. Forty years' worth of collections are on display : old posters, books, statuettes, real scout constructions and more.



Open by appointment



Rue du Maitrank, 49
6700 Bonnert



Adults : 5€ Students : 3€
Minimum 3 people



www.museescout.be



+32(0)63 22 15 53



MUSEUM OF AUTELBAS

In the Early Middle Ages, Autelbas was an important potters' workshop.

The museum presents the remains of the Carolingian potters' workshop as well as discoveries from the castle whose ruins are located nearby.



Open by appointment



Am Eck, 26
6700 Autelbas



Adults : 2€
Children : free



www.autelbas.be



+32(0)63 23 46 39





ATHUS AND STEEL

Immerse yourself in the atmosphere of the factories, where men worked iron in conditions of heat, dust and noise. Discover the steps in the process of manufacturing cast iron and steel, etc.



Closed due to moving



Rue du Terminal, 11
6791 Athus



Adults : 5€ Students : 1,5€
Children : free



www.athus-acier.be



+32(0)63 38 84 84

+32(0)495 46 19 20

FUNNY MOUNTAIN

Funny Mountain is a recreational climbing centre. A unique concept in Belgium, an experience accessible to everyone over the age of five. Fasten yourself up and off you go! Experience a moment brimming with emotions! For all ages and all tastes.



See the various possibilities on the website.



Rue de Graas, 101
6700 Arlon



See on the website



<https://funnymountain.be>



+32(0)63 39 59 99





LUXFLY SKYDIVE

Without an aircraft or altitude, indoor skydiving reproduces the sensations of a parachute jump thanks to an air flow in a wind tunnel. Participants have the impression they are 'floating' a few metres above the ground and leaping into the void for a minute or two.



Upon reservation : see the various possibilities on the website.



Rue de Grass, 103
6700 Arlon



See on the website



<https://indoorskydive.lu>



Luxfly Skydive



ADMIRE OUR HERITAGE

ARLON

THE GALLO-ROMAN CITY

Welcome to Arlon, one of the three oldest cities in Belgium !

In Roman Times, Arlon was known as *Orolaunum* and was ideally situated at the crossroads of two major roads : that from Metz to Tongeren and that from Reims to Trier.

Two thousand years of history have endowed the city with a rich Gallo-Roman heritage which is well worth exploring.

There are two Roman towers to discover and magnificent remains to see in the Archaeological Museum... exceptional heritage to be preserved and shared!

OUR GALLO-ROMAN HERITAGE



1 ROMAN TOWER JUPITER
Visible from Rue du Marquisat in Arlon
Visit possible via the Arlon Tourist Office

2 ROMAN TOWER NEPTUNE
Grand Place in Arlon
Visit possible via the Arlon Tourist Office

3 ARCHAEOLOGICAL MUSEUM
Information on page 14

4 ARCHAEOLOGICAL PARK
Rue des Thermes Romains in Arlon

5 GALLOR CYCLING CIRCUITS

6 GALLO-ROMAN COLUMN
Grand-Rue in Arlon



WOULD YOU LIKE TO FIND
OUT MORE ?

ASK ABOUT *THE WALK THROUGH
THE CITY* AT OUR RECEPTION !



**OUR
BUILT**

PATRIMOINE

BEAUTIFUL

1

SACRÉ-CŒUR

Rue des Déportés
6700 Arlon

2

SAINT-NICOLAS

Rue de la Comtesse, 67
6792 Battincourt

3

SAINT-REMACLE

Rue des Blés d'Or
6780 Hondelange

4

SAINT-ÉTIENNE

Rue des Deux Églises
6717 Attert



Work is currently under way to convert the church into a cultural centre.

CROSSES AND CALVARIES



You will come across many crosses and calvaries on your way through the Land of Arlon. But do you know what purpose they served? Besides their religious aspect, they were used as landmarks for travellers or as gathering points.

ST. DONATUS' CHURCH



Square Élisabeth
6700 Arlon

When visiting the lovely city of Arlon, be sure not to miss St. Donatus' Church and its charming district. Approach the church (built on a mound and overlooking the city) via the majestic Montée Royale steps, admire the superb panoramic view that spreads before you, walk beneath the Dogwood Arbours, which are over 350 years old, and more. Enjoy the peace and the beauty of this site, which has in turn held a castle, a convent and a bastioned enclosure transforming the convent into a citadel, and stroll through the old district of the city, at the foot of the mound.

Climb the steps of the Montée Royale and discover St. Donatus' Church with its incredible panoramic view. The belvedere (p. 15) awaits you just behind it.

ST. MARTIN'S CHURCH



Square Albert 1^{er}
6700 Arlon

St. Martin's Church is also well worth a visit! This superb edifice was built between 1907 and 1914 and belongs to the exceptional heritage of Wallonia. It has been a listed monument since 2002!

This impressive structure is visible from afar in the Arlon landscape. Its tower is 97 m high. Don't hesitate to go into the church itself and admire its magnificent stained glass windows, in particular.

The best time of the day to visit the church seems to be the late afternoon, when the setting sun pierces its rosette...

CHURCHES



OTHER PLACES

THE VILLAGE OF NOBRESSART



Commune of Attert



The village of Nobressart is labelled as one of "The Most Beautiful Villages in Wallonia".

In the heart of a hilly amphitheatre, in a gentle landscape, Nobressart appears. The light shades of its plastered facades and the blue of its slate roofs contrast with a green environment.

Located at the outlet of four small valleys, this village draws all its charm from a harmonious duality. From the main street arise paths creating tiny neighbourhoods composed of a few houses. Don't miss the discovery of this village during the 5 km walk that crosses it.



THE VILLAGE OF GUIRSCH



Commune of Arlon



Guirsch is a charming little village with a listed centre.

Numerous old farms can be found here.

Whether for its built heritage, its superb viewpoint from St. Willibrord's Chapel or its listed castle (private property), the village of Guirsch is well worth a visit.

Follow the waymarked walk to discover the place (see p.34).



Guirsch became one of "The Most Beautiful Villages in Wallonia" in May 2023.

TO SEE**THE STAG BELLOWING**

Square Astrid
6700 Arlon

This work welcomes passers-by at one of the entrances to the city. The sculpture, by Jean Gaspar, was first made in plaster and then cast in bronze in 1913.

A larger version stands in the square, while the original work can be admired in the Gaspar Museum (p. 13).

**PLACE LÉOPOLD**

Place Léopold
6700 Arlon

This is the main square in Arlon. Two important buildings are worth noting: the provincial palace and the Palace (former law courts, built between 1864 and 1866), which is now dedicated to culture.

Enjoy a short break on the terrace of one of the cafés and restaurants opposite the provincial palace. And why not taste the famous Maitrank ?

**THE MUNICIPAL CEMETERY**

Route de Diekirch, 20
6700 Arlon

The old section of Arlon cemetery has held tombs remarkable for their decoration since the 19th century, as well as those of leading figures in the history of Arlon. This is a pleasant place to walk.

THE GRAND-PLACE IN HALANZY



Commune of Aubange

Not to be missed in this square : the locomotive "L'Américaine", its wagons and the menhir of Fernand Tomasi, which symbolise the mining past of this place, as well as the school building, which once housed the management of the Musson plant.

The glass roof that covers the courtyard of the old town hall is also worth noting.



CLÉMARAIS ESTATE



Rue de Clémaraïis
6790 Aubange



Construction on the first castle began in the 14th century and was completed in around 1422. All that remains of this period is a square tower known as the Tour aux effraïes (Barn owls' tower).

Nothing is left of the second castle, built in the 17th century, except the outbuildings, one of which houses the Tourist Office and the other the sports centre.

The main building of the third castle dates from 1839.





ARLON SYNAGOGUE



Rue Saint-Jean
6700 Arlon

This was Belgium's first synagogue.

The outer façade of this building in the Romantic-Byzantine style presents an Oriental appearance.

Arlon is also home to the oldest functioning Jewish cemetery in Wallonia (1856).

THE FORTIFIED FARM



Rue de Noedelange, 1
6791 Guerlange

The fortified farm of Noedelange stands at the heart of a valley of the same name.

The original structure dates from the 14th century. Its imposing cubic house was converted in the early 17th century. It has a hipped roof and includes rural outbuildings dating from the early 18th century.

Not open to visitors.

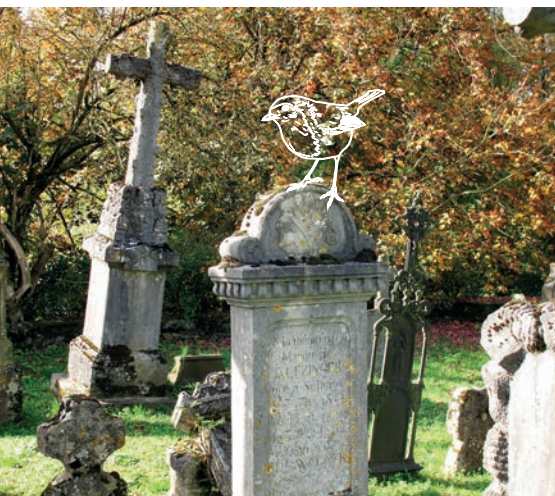


THE OLD CEMETERY OF GUERLANGE



Rue Saint-Martin
6791 Guerlange

The tombs, which date from the 18th and 19th centuries, bear witness to the wealth of Guerlange. Its 14th century chapel is of historical interest thanks to its various remains, some of which are of Gothic origin.



DIVE INTO OUR NATURE



1 THE NOTHOMB NATURE RESERVE



Rue de l'Or
6717 Nothomb

Very beautiful 2 km walk passing through the Nothomb nature reserve. A footbridge and a grating allow you to cross the wet area with dry feet.

Educational panels on fauna and flora adorn the route.

2 GRENDEL MARSH



Route de Rédinge
6717 Grendel

Grendel nature reserve now has an observation platform, a duckboard and educational panels. Make the most of this protected environment to enjoy a lovely walk in the countryside.

Access : route de Rédinge, on the right after the last house. Cross the meadow with the observation platform.

REMARKABLE WETLANDS



3

HEINSCH MARSH



Route de Neufchâteau
6700 Arlon

A pretty 2.6-km walk around marshes, enhanced by educational panels. The landscapes here are remarkable. The Heinsch marshes are open to visitors, as long as you follow the paths set out. You are also requested to keep dogs on a leash.

Access: *the entrance to the site is opposite No 565, Route de Neufchâteau.*

4

TATTERT POND



Chemin des Écrevisses
6717 Tattert

This place, formerly a fishing pond, is currently dedicated to nature and calm. Educational panels explain the life of the inhabitants of the pond, the birds of the woods and the beavers.

A wooden pontoon has been built so that you can watch the teeming life of the pond.

You can go around the pond on foot.



5

FOUCHES MARSHES

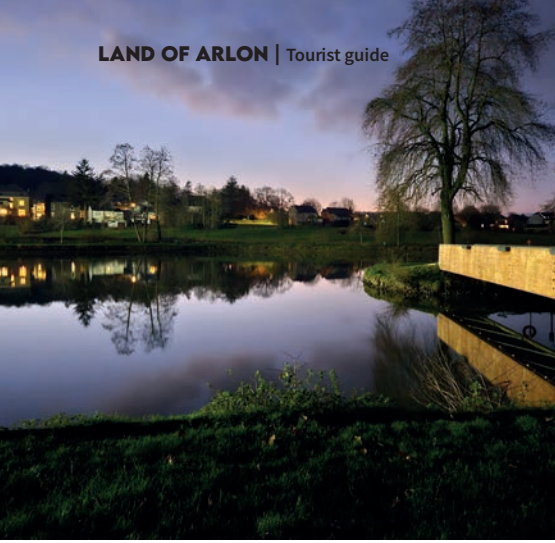


Chaussée Romaine, 38
6700 Fouches

Take a short 1.9 km walk to explore the Fouches marshes. Between dirt track and wooden duckboard, the circuit offers you the chance to explore the shimmering countryside. Change of scenery guaranteed! The marshes are open to visitors, as long as you follow the paths set out.

Access: *the entrance to the site is opposite Chaussée Romaine No 38.*





NATURE

IN ALL
ITS SPLENDOUR



LAKE OF MESSANCY



Domaine du Lac
6780 Messancy

This lake is mainly **used for fishing**. You can go around it during a pleasant walk or stroll along its banks.

Don't miss the greenway near the pond : this pedestrian or cycle path will take you **to Parc Mathelin**, where playgrounds and green spaces await you (see p.31).

In the other direction, this pleasant path **passes through fields to lead directly to the Shopping Cora** stores.



FRASSEM ARBORETUM



Rue de la Scierie
6700 Frassem

Trees from our forests, fruit trees and shrubs are gathered in an area of two hectares. Explanatory panels are dotted around the park. A pond is home to frogs, newts, dragonflies and more.

A kiosk with a picnic table is also available.

The arboretum is the starting point for a delightful walk.



ANIMAL PARK



Quartier Pesch
6791 Athus Arlon

The park boasts relaxation areas, spaces to discover some of the animals of the region and amusements for younger visitors, including a playground adapted for children with reduced mobility.



MATHELIN PARK



Rue du Château
6780 Messancy

Pretty green park covering four hectares with a playground for children and a multisports area. Everything you need to enjoy spending time as a family. Follow the footpath linking the centre of the village and Mathelin Park to the Domaine du Lac.





TATTERT QUARRY



Chemin des Écrevisses
6700 Tattert

After the quarry was abandoned, in 1988 the commune decided to list the site as a nature reserve. Two educational panels at the entrance explain the geology of the place.

Access : in *Chemin des Écrevisses*, take the path opposite No 21.



OCTOFUN COURSE



Voie de la Liberté, 107
6717 Attert

The Octofun space consists of eight modules and panels scattered around an orchard which cover various subjects : birdsong, treasure hunt, identification of tree leaves, etc.

A fun-filled, amusing activity.

Access : the area lies behind the municipal administration building.



SOURCE OF THE SEMOIS



Rue des Tanneries
6700 Arlon

Discover the charmingly laid out Source of the Semois. Searches to locate the source were carried out between 1967 and 1970. These excavations revealed two collection basins which belonged to nearby tanneries.

WANDER ON OUR PATHS

OVER

35 WAYMARKED WALKS

AWAIT YOU !

Be surprised by the countryside and the heritage of the Land of Arlon as you walk through our villages.

Maps and leaflets available

- at our reception,
- in the Aubange Tourist Office,
- at the Attert Valley Nature Park
- or on www.paysdarlon.be

Download the routes from our website or via **Cirkwi** (website and app).



www.cirkwi.com



www.paysdarlon.be

GO FOR
A WALK

ON

FOOT



Most Beautiful
Villages of Wallonia

GUIRSCH

6,9 KM

Stroll through the streets of Guirsch, which in May 2023 became one of the Most Beautiful Villages in Wallonia.

The architectural heritage here is particularly well preserved. you can admire several remarkable farms dating from the 18th and 19th centuries. At the end of the walk, the trail passes through a find hardwood forest before reaching the delightful Vallée des Trois Moulins (Valley of the Three Mills).

OUR

WAYMARKED

TRAILS

ARLON

ARBORETUM,

3 KM

between nature and discovery

This walk invites you to get to know more than 50 species of trees in our regions. With its pond, nesting boxes, insect hotel and beehives, the Arboretum encourages wildlife.

"À LA CLAIREFONTAINE, m'en allant promener"

2,5 KM

3,8 KM

Combine 2 or 3 walks near a site full of history : the Clairefontaine archaeological site.

4 KM

MOUNT HIRTZENBERG

3,8 KM

This walking trail takes you around the highest peak in southern Belgium, Mont Hirtzenberg, which reaches a height of 465 metres. Cross a magnificent wood of deciduous and spruce trees.

BONNERT

5,5 KM

and its hammering plant

You will be captivated by a site pervaded in peace : the Old "Moulin de la Platerie" with its relaxing ponds.

At the heart of the primitive forest in UDANGE

7,3 KM

This is a pleasant route to walk along, alternating between undergrowth and plateau.

FROM SESSELICH TO WOLKRANGE

7,7 KM

Easy, pleasant route suitable for pushchairs, among countryside and woods, between the ponds of Wolkrange and a wild valley.

WALTZING-EISCHEN Belgo-Luxembourg walk

10,3 KM

A varied walk with lovely viewpoints among fields, woods, residential districts and villages.

ATTERT

TONTELANGUE in frames 7,4 KM

This walk offers an original way to discover the village of Tontelange and the surrounding area. Several frames are dotted along the route, providing a novel means of admiring the viewpoints in front you a different way.

Walk through minor heritage in THIAUMONT 7,4 KM

You will discover calvaries, chapels and a washhouse along your way. Do not miss the Tattert pond and the Tattert quarry.

HEINSTERT, beautiful, poignant valley 8,6 KM

Walk along the old tram tracks in ATTERT 9,3 KM

This walk will take you to discover the old tram track which used ton connect Arlon to Martelange. It will also take you on the "Voie de la Liberté", a remembrance place of WW2.

POST for everyone 9,7 KM



This circuit has been adapted to suit people with reduced mobility and strollers.

HEINSTERT, at the gateway to Anlier Forest 10,4 KM

CROSS-BORDER WALK Camille Gira IN OBERPALLEN 10 KM

CROSS-BORDER WALK around COLPACH castle 12,8 KM

Walk on the cuesta in LISCHERT 14 KM

The cuesta is a geological formation typical of the Lorraine landscape. From the top of this hill eroded over the years, you will admire a very beautiful viewpoint : the city of Arlon from a distance, with its two churches, Saint Donatus and Saint Martin.



DO NOT MISS

Walk along the water's edge in NOTHOMB 7,5 KM

Do not miss the Nothomb Nature Reserve, it's worth a look ! (Details p.28)

HEINSTERT, peaceful walk 10,4 KM

Enter one of the largest forests in Belgium, the Anlier forest, and discover the "Gros Chêne", classified as a remarkable tree. In spring, you will cross a stretch of daffodils before reaching the valley : the place is magical.



Most Beautiful Villages of Wallonia

NOBRESSART 5,6 KM

This walk will make you discover Nobressart, one of the Most Beautiful Villages of Wallonia. It has been labelled in particular thanks to its public spaces which highlight its typically Lorraine architecture.

You will also discover the Nobressart quarry, classified as a Site of Great Biological Interest. There is a great wealth of bird species.



"MEMORY" WALKS

ATHUS, green city 4,1 KM

Stroll through the streets of Athus and discover neighborhoods that recall the locality's steelmaking past, including housing intended for workers at the Athus factory. This walk ends with a little park with animals from the region and a playground. *(see details page 31)*

AUBANGE, between Brull and Brouch 6,5 KM

This walk starts from the historic site of Clémaraïs.

It takes you near the place of Abbot Michel Gigi, so named in honor of the missionary who devoted himself body and soul to his parish of Cyeza (Rwanda) and who died there during the tragic events of 1994.

You will also discover the Brouch, a wetland to preserve.

THE BOIS-HAUT in Halanzy 12,8 KM

This walk on the steep slopes of a cuesta will take you into one of Belgium's loveliest beech woods. The forest undergrowth also reveals the mining past of the region with the old minette mine (Lorraine iron ore).

Other mining remains are to be seen along the way.

AUBANGE

RACHECOURT, gate of the Gaume 3,1 KM

Discover a typical village of the Gaume.

Explore the conservatory orchard created to preserve old varieties of apples.

HALANZY trails in the Gaume 4,2 KM

AIX-SUR-CLOIE, in the heart of rurality 5 KM

This walk takes you to a typical Lorraine village with its old farms and traditional houses of the Land of Arlon.

You can also see several old calvaries and two drinking troughs from the 19th century. Along the way, magnificent panoramas of our rural region enhance the walk.

THE BATTE TRAIL in Halanzy 6,3 KM



This circuit has been adapted to suit people with reduced mobility and strollers.

THE JOLI BOIS in Athus 8,7 KM

This is a lovely, easy walk at the heart of the Bois d'Athus in a splendid beech wood adorned with orchids. From the path, you will also spot the village of Guerlange, nestling on the other side of the cuesta.

THE 7 SPRINGS in Battincourt 9,5 KM

Here is a walk that leads you to encounter a rich nature : remarkable trees, ponds and beautiful tree-lined terraces.

THE BOIS DE PRIRE in Rachecourt 10 KM

THE CLÉMARAIS in Aubange 12,5 KM

This pretty walk starts from the Clémaraïs estate, a listed site pervaded by the history of the lords who lived here. You will discover the village of Aix-sur-Cloie, you will also roam along the forest paths and cross green pasturelands.

MESSANCY

BÉBANGE walk

7 KM

This walk crosses through three villages, Bébange, Guelff and Habergy. You go from one village to another following paths or narrow trails through a mainly agricultural region. You will also find an old, restored washhouse with a playground nearby.

A great opportunity to relax for old and young alike.

HABERGY walk

7 KM

Following the path along the water, you will discover buildings that form part of the local minor heritage: a washhouse and mill, as well as a pond. You will be able to enjoy fine views over the neighbouring villages. You will walk through quiet, peaceful places rich in a wide variety of fauna and flora.

SÉLANGE walk

10 KM

You will spot a superb chapel with a breath-taking view over the surrounding countryside. You will then take a path towards the old Roman road between Arlon and Titelberg which runs along the Luxembourg border.

JONGEBËSCH walk

10 KM

The route leads you into two hardwood forests. Along the way, you cross three cuestas, typical of the sloping relief of the Lorraine plateau.

It then reaches the village of Messancy past **the water lily pond** on the edge of the wood. Be sure to stop on the banks of the lake (Lac de Messancy). *(see details page 30)*



ARLON

1

AND ITS FINE FAÇADES

As you walk along this route, discover the finest façades in the old district and the city centre of Arlon, one of the three oldest cities in Belgium.

Numerous houses, ranging in style from the Neo-Classical to the eclectic, or Art Nouveau and Art Deco, lend the city an undeniable charm.

ATTERT

2

AND ITS TRADITIONAL ARCHITECTURE

The commune of Attert is home to many farms and buildings in the traditional architectural style, bearing witness to an important rural past.

Go and discover them at the heart of the villages of Attert and Nothomb as you enjoy the peace and quiet of the surrounding countryside along this walk.



THE ARCHI-WALKS



The Archi-walks : four architecture-themed walks ! These unusual routes, from **2 to 7 km**, will take you to explore Arlon, Attert, Messancy or Aubange a different way. Leaflets available free of charge at our reception or on Cirkwi.

AIX-SUR-CLOIE

3

ITS CALVARIES AND ITS COUNTRYSIDE

Head for Aix-sur-Cloie, a quiet, charming village where a lovely walk reveals countryside and architecture.

Go and discover its calvaries, religious elements found throughout the Land of Arlon, and its typical old farms, enjoying varied landscapes along the way.

MESSANCY

4

AND ITS OLD VILLAS

Most of the superb villas in Messancy were built by notaries. Converted over the years into a Town Hall here, an exhibition room there or a school, they add a unique touch to the village.

Along this walk, discover the hidden treasures of the commune of Messancy.

OTHER

WALKING IDEAS



WANDER on our paths

EDUCATIONAL TRAIL IN METZERT

Little interactive stations along a short, **two-kilometre** trail tell you about animals, plants and birds.



Accessible to PMR

More details : www.pnva.be



FITNESS TRAILS

PARCOURS SANTÉ DE LA COVA - ARLON

Start : Chemin de la Hart

GPS coordinates : 49.69936, 5.81590

The fitness trail takes you to 11 exercise stations along a short **500-m** path.



FREYLANGÉ, BOIS DU BEYNERT - ARLON

Start : at the entrance of the wood, after the football field, chemin du Jongebesch.

GPS coordinates : 49.70527, 5.76195

The fitness trails takes you on a **2.8-km** walk. Twenty stations are dotted along the circuit.



GO FOR A

BIKE

RIDE



GALLOR

The 'Gallor' circuits mainly follow the old Roman roads or routes of Gallo-Roman interest. Cycle off to discover our region's past!

The Land of Arlon has **four circuits** :

CIRCUIT 6

Habay - Sampont - Etalle : 35 km

CIRCUIT 7

Arlon - Nobressart - Bonnert : 28 km

CIRCUIT 8

Arlon - Sélange - Wolkrange : 36 km

CIRCUIT 9

Aix-sur-Cloie - Battincourt : 9,7 km

A total of fifteen circuits are available, with something to suit everyone.

Free leaflets available at our reception or on www.arlon-tourisme.be

THE CUESTA ROUTE

The Cuesta Route partly crosses landscapes overlooked by the first Lorraine ridge, known as the Sinemurian cuesta. A lovely cycle circuit covering **27 kilometres**, exploring the countryside and villages of the Attert Valley.



BELAREL

Sixty-five-kilometre circuit exploring the villages in the commune of Arlon. The route, which is marked in both directions, follows paths and secondary roads.

Good to know : there is no defined starting point, so you can start your ride wherever you wish.



REMARKABLE TREES CIRCUIT

Following this **39.9-kilometre** circuit, you will discover remarkable trees. Trees that are exceptional owing to their age, their size, their shape, their past or the legend that surrounds them.



THE NODE-TO-NODE CYCLING NETWORK

The node network is a signposted cycle network consisting of **a series of interconnected tracks**. In the province of Luxembourg, this network forms a grid of more than 2,600 km covering all 44 municipalities.

This signposting system allows you to **design your route "à la carte"** and without a paper map. The possibilities are endless, depending on the length of your route, your skills and your wishes !

More information on the website of the Province of Luxembourg



www.province.luxembourg.be/pointsnoeuds



PLAY TO EXPLORE

1 EXPLORE ARLON GAME

Riddles, questions and games all designed to explore Arlon! This children's brochure indicates a route through the streets of the city centre to explore the various places.



For children



On sale at the Royal Office
du Tourisme d'Arlon (Arlon
Tourist Office)
Rue des Faubourgs, 2
6700 Arlon



2€

2 CITY TREASURE HUNT IN ARLON

Walk around, answer questions, find the right place - this is just the way to explore Arlon and its history. Download the free Totemus app to play.



For families



Download the
free Totemus app
to play.

3

CITY ESCAPE GAME IN ARLON

Fancy playing a game as you walk around exploring the city ? A city escape game is available, with two themes to choose from.

Riddles to solve, observation questions and more... keep your eyes peeled! The game can be played as a team, with up to six smartphones connected !



**For young people
and adults**



Game codes on sale at the Royal
Office du Tourisme d'Arlon (Arlon
Tourist Office)
Rue des Faubourgs, 2
6700 Arlon



19.99€ / 4 smartphones
39,99€ / 6 smartphones (max)



<https://visitarlon.be>



+32(0)63 21 63 60



4

ESCAPE GAME BY BIKE IN AUBANGE

Take part in an original, fun cycling experience as you become a real detective, resolving various fascinating riddles.



Accessible from 8 years



Registration and information
from the Aubange Tourist Office



Rue de Clémarais, 28A
6790 Aubange



info@aubange-tourisme.be



+32(0)63 38 86 54



FISHING

PÊCHERIE DU LAC

Rue d'Arlon, 54
6780 Messancy
+32(0)460 96 15 39
www.lacdemessancy.be

HORSE RIDING

RIDING CENTRE

Rue de la Follmillen, 17
6700 Viville

+32(0)63 22 29 32

Riding lessons and walks

- Sat. & Sun. morning
- Wednesday afternoon
- and on request

OUTDOOR ACTIVITIES



**VENTURE
OUTDOORS**

SWIMMING POOLS

HYDRION SPRTS CENTRE

Rue de l'Hydrion, 108
6700 Arlon
+32(0)63 24 29 50
www.sport-adepts.be

Heated open-air swimming pool in July and August.

RÉDANGE SWIMMING POOL

Rue de la Piscine, 28
8502 Rédange (GD de Luxembourg)
+352(0)23 62 00 32
www.reidener-schwemm.lu

Indoor and outdoor swimming pool (in summer), paddling pool for children, etc.

SQUASH & TENNIS

GARISART TENNIS CLUB

5 outdoor courts and 6 indoor courts
Zoning artisanal de Weyler, 30
+32(0)63 22 74 40
www.garisart.be

SPETZ SPORTS COMPLEX

2 outdoor courts and 2 indoor courts
Carrefour de la Spetz, 2
6700 Arlon
+32(0)63 21 75 06

MOUNTAIN BIKES, E-BIKES FOR HIRE

ROYAL OFFICE DU TOURISME D'ARLON

Rue des Faubourgs, 2
6700 Arlon
+32(0)63 21 63 60
www.visitarlon.be
5 adults bikes, (3 e-bikes et 2 trek bikes),
one child's seat and one child's trailer

ATTERT VALLEY NATURE PARK

Voie de la Liberté 107
6717 Attert
+32(0)63 22 78 55 -
www.pnva.be
3 adults e-bikes

RENT A BIKE

Rue de Longwy, 3
6790 Aubange
+32(0)63 40 30 15
+32(0)486 92 12 16
bikestoreaubange.com

HOT AIR BALLOON FLIGHT

MONTGOLFIÈRE ARDENNE

+32(0)497 44 54 64
https://montgolfiere-ardenne.be
info@filva.com

PICNIC & PLAY

AREAS

ARLON

GASPAR PARK

Rue des Martyrs, 16
6700 Arlon

- Tables and benches
- Play area

FRASSEM ARBORETUM

Route de Diekirch
6700 Frassem

- Sheltered table and benches

CLAIREFONTAINE ESTATE

Rue du Cloître, 33
6700 Arlon

- Tables and benches
- Barbecue upon reservation,
call +32(0)63 21 78 02

ESPACE MILAN

Drève des Espagnols
6700 Arlon

- Sheltered table and benches
- Barbecue

ATTERT

NOBRESSART

Rue de la Halte
6717 Attert

- Tables and benches
- Play area
- Barbecue

THIAUMONT

Rue Orée du Bois
6717 Attert

- Tables and benches
- Barbecue

METZERT

Rue Saint-Côme et Damien
6717 Attert

- Tables and benches
- Barbecue

POST

Voie des Champs Mêlés, 50
6717 Attert

- Tables and benches
- Play area
- Barbecue

AUBANGE

ATHUS MUNICIPAL PARK

6780 Athus

- Benches
- Play area
- Small animal park (goats,
sheeps, chickens, etc.)

MESSANCY

MATHELIN PARK

Rue du Château
6780 Messancy

- Tables and benches
- Playground
- Multisports area

EXPERIMENT INDOORS



ESCAPE ROOMS

ESCAPE ROOM ARLON

Rue de Neufchâteau 150 - 6700 Arlon
+32(0)493 07 22 02
www.escaperoomarlon.be

LOCKED UP

Rue de la Poste, 3 (1st floor)
6700 Arlon
+32(0)492 656 656
<https://www.locked-up.be>

ESCAPE GAME AT THE "ATHUS ET L'ACIER" MUSEUM

Rue du Terminal 11
6791 Athus

Closed due to moving (Details p. 18)

SHOPPING CENTRES

HYDRION SHOPPING CENTRE

Rue de l'Hydrion
6700 Arlon

SHOPPING CORA

Route d'Arlon 220
6780 Messancy

DESIGNER OUTLET LUXEMBOURG

Route d'Arlon 199
6780 Messancy

« LES ACACIAS » SHOPPING CENTRE

Rue du Commerce 15
6791 Athus





INDOOR PLAYGROUNDS

YOYO ARLON

Play area for children of all ages
Hydrion Shopping Centre
+32(0)63 22 23 17
<https://yoyo-arlon.be>

KOJUMP

2.000m² of space dedicated to trampoline-based attractions.
In Cora Shopping Center
Rue d'Arlon, 220
6780 Messancy
+32(0)63 38 89 71
<https://kojump.be/fr/parcs/kojump-messancy/>



KOMINI

Playroom for children from 2 to 10 years old
In Cora Shopping Center (same place as Kojump)



BOWLING

S'PACE BOWLING

Route de Longwy, 599
6700 Weyler (Arlon)
+32(0)63 23 03 80
www.space-arlon.be



SKYDIVING

LUXFLY SKYDIVE

Details p.19

WELLNESS SPACE

PARADIS DE SEL

Rue du Village, 8a
6790 Aubange
+32(0)63 42 46 86
www.paradis-de-sel.be

- Salt caves
- Salionarium
- Boutique



INDOOR SWIMMING POOLS

LA SPETZ

Carrefour de la Spetz
6700 Arlon
+32(0)63 21 75 06
+32(0)63 21 75 98

AU JOLI BOIS

Rue de la Piscine
6790 Athus
+32(0)63 38 74 61
www.aubange.eu

Work in progress until 2024



ROCK CLIMBING

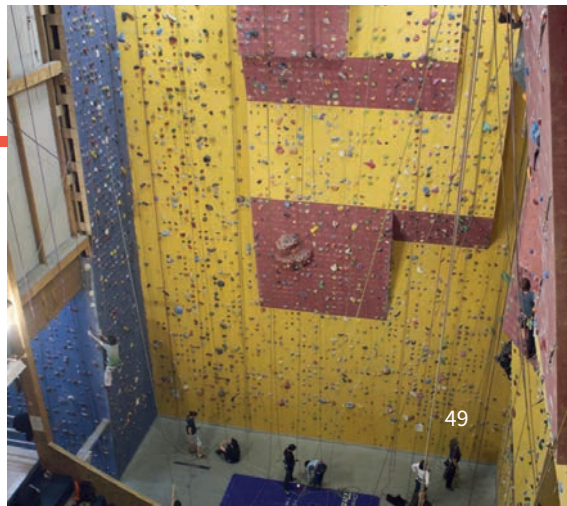
L'ESCALE

Avenue de Mersch, 20
6700 Arlon
+32(0)63 57 27 57
www.lescalearlon.be

- Rock climbing area of 1200 m2
- Fitness room

FUNNY MOUNTAIN

Details p.18



LIVE THE CULTURE



CONCERTS, EXHIBITIONS, SHOWS

GALERIE ESPACE BEAU SITE

Avenue de Longwy, 321
6700 Arlon
+32(0)478 52 43 58
www.espacebeausite.be

MAISON DE LA CULTURE D'ARLON

Parc des Expositions, 1
6700 Arlon
+32(0)63 24 58 50
www.maison-culture-arlon.be

LE PALAIS Exhibition centre

Place Léopold
6700 Arlon
+32(0)63 23 53 97
www.palaisarlon.be

L'ENTREPÔT Concert hall

Rue Zénobe Gramme
6700 Arlon
+32(0)63 45 60 84
www.entrepotarlon.be

CENTRE CULTUREL D'AUBANGE

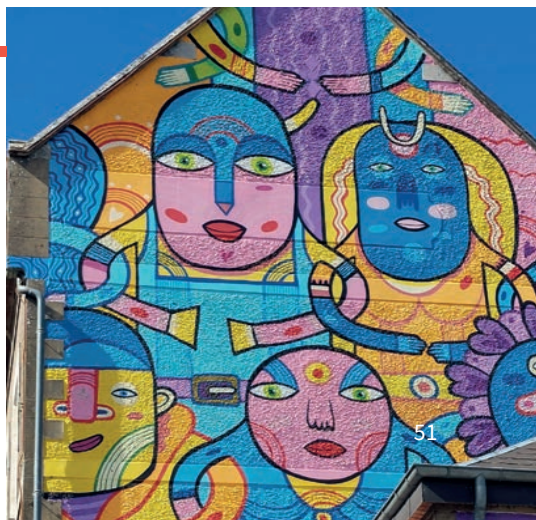
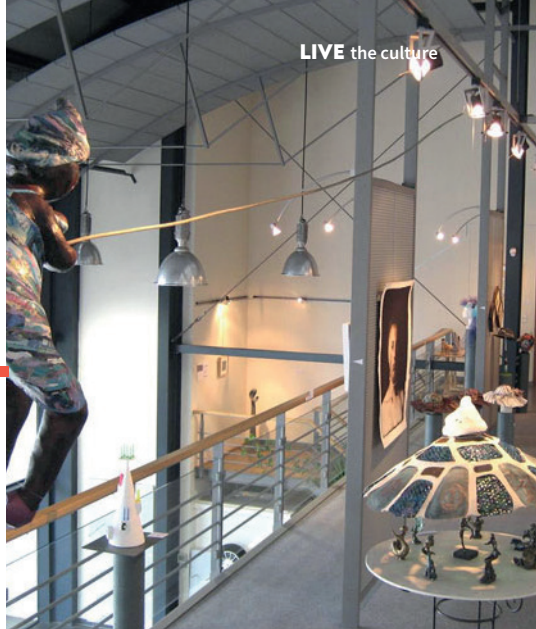
Rue du Centre, 17
6791 Athus
+32(0)63 38 95 73
www.ccathus.be

CINEMA

CINÉ ESPACE

Rue de Diekirch, 36
6700 Arlon
+32(0)63 22 45 62
www.cine-espace.be

LIVE the culture



TASTE

THE MAITRANK



The Maitrank, a drink that is emblematic of the Land of Arlon, is an aperitif based on white wine and sweet woodruff (see above), a plant typical of the region. You simply have to taste it !



THE MAITRANK AMBASSADORS

The 'Maitrank Ambassador' label was created in 2013. This label is used to recognise hotels, restaurants and cafés that serve craft Maitrank. This plaque (opposite) is displayed in places in the Land of Arlon that have been recognised as Ambassadors and where home-made Maitrank can therefore be sampled. Don't hesitate to go in!

The list of hotels, restaurants and cafés is available on our website or from our reception.



LOCAL PRODUCER

RIDREMONT

Rue de l'Hydrion, 115a
6700 Arlon
Tél. : +32(0)61 65 85 95
info@ridremont.be



THE RECIPE

- 1 l white wine
- 12 sprigs of non-flowering sweet woodruff
- 50 g sugar
- 5 cl de Cognac or Armagnac
- 1 orange, sliced

Leave all the ingredients to macerate for 48 hours, then filter the maceration and bottle.

LOCAL

BEERS AND ALCOHOL

TASTE

ARLON BREWERY



Points of sale : see website
www.brasseriearlon.be

In 2020, the *Brasserie d'Arlon* opted to strengthen its commitment to a more social, more mutually supportive and more ethical economy and became the Brasserie d'Arlon Coopérative, BAC for short !

METZERT BREWERY



Rue des Trois Fontaines, 237A
6717 Metzert

The *Brasserie de Metzert*, which has been installed in its current premises since 2017, offers several different beers.

Tél. : +32(0)496/45 87 68.
brasserieemetzert@hotmail.com

GIN OROLAUNUM VICUS



Gone Concept SRL
Rue d'Udange, 38
6700 Arlon

Orolaunum Vicus is a high quality organic gin distilled in Belgium.

Inspired by the ancestral Maitrank recipe and the Gallo-Roman origins of *Orolaunum*, the gin presents an elegant bitterness, intense citrus aromas and subtle woodruff notes.

www.orolaunumvicus.be





CHEESES

BARNICHÈVRE

The *Barnichèvre* cheese plant is established in an old farm in Arlon. Its sixty goats provide milk which is used to make fresh cheeses.

Tél. : +32(0)498/38.59.64

Points of sale :

- On the farm or at markets
Am-Eck 27
6706 Barnich
- Épicerie du Val d'Attert
Rue de l'Eglise 241
6717 Thiaumont



AU FIL DU LAIT

Artisanal products.
Sheep breeder and dairy product producer.

Rue du Marquisat, 325
6717 Thiaumont

Tél. : +32(0)499 60 17 96
info@aufildulait.be



FERME SAUR

The *Ferme Saur* in Metzert produces several cheeses, one of which is made with Maitrank (see p. 52). You simply have to taste it!

Rue des Trois Fontaines
6717 Metzert
Points of sale : see website
www.saurtilege.be

Tél. : +32(0)63/22 29 94

JUICES

RACHECOURT JUS

Rachecourt jus is a craft juice press business that specialises in apples and pears.

The juices are prepared using the best fruits picked and fruit purée, pressed using a traditional method, which guarantees a 100% natural, pure juice.

Points of sale :

All year round on site or in stores such as Cora, Carrefour and others.

Tél. : +32(0)63 67 76 68
www.rachecourt-jus.be

To have your apples pressed : make an appointment from September (the pressing period fluctuates depending on how the fruit ripens).

GAUME JUS DE POMMES

The juice, obtained by pressing Gaume apples, is 100% natural, without added water or sugar. Production of apple juice and apple-pear juice.

Apple juice and vinegar for sale on site.

Rue du Moulin, 2
6792 Halanzy
Tél:+32(0)470 51 90 99
Tél:+32(0)63 67 72 70



HONEY

L'ABEILLE ARLONAISE

Beekeeping Section of Arlon Messancy

Beekeeping training, specialisation in queen rearing. Sale of honey.

ASBL L'Abeille Arlonaise

Route de Rédange (Caserne Callemeyn)
6700 Arlon
+32(0)477 95 56 56
www.abeille-arlonaise.be

REGIONAL BUTCHERS

Taste our regional products :
salted meats, Gaume pâté
and more.

1

BOUCHERIE THILL

Rue des Deux Églises, 201
6717 Attert
+32(0)63 22 56 15

2

SAVEURS DE GAUME

Rue de l'Industrie, 2
6792 Halanzey
+32(0)63 67 85 79

3

BOUCHERIE WAGNER

Avenue de la Gare, 78
6790 Aubange
+32(0)63 38 98 48

4

BOUCHERIE CHEVIGNÉ-BORGES

Grand-Rue, 56
6791 Athus
+32(0)63 60 08 81

5

BOUCHERIE MATGEN

Rue de Neufchâteau, 156
6700 Arlon
+32(0)63 22 43 75



GO OUT

DISCOVER ALL
OUR EVENTS

FOR MORE
INFORMATION,
VISIT OUR
WEBSITE

Les Aralunaires festival (details p.60) :
Concert in St. Martin's church



www.paysdaron.be

MARKETS

WEEKLY MARKETS

- **Arlon** City center : Thursday morning
- **Arlon** Inside the bloc Milan - organic products markets : Friday from 4.00 pm to 7.00 pm
- **Athus** Place du Brüll : Friday morning
- **Halanzy** Grand-Place : Saturday morning

REGIONAL PRODUCTS

- **Tout Rachecourt dans les pommes**

Apple festival and entertainments
Early October - Rachecourt

OTHER

- **Militaria Fair**
Military objects - six Sunday mornings per year - Arlon
- **Flower Market**
3rd Saturday in May - Aubange
- **Solidarity Christmas market**
In December - Arlon

SECOND-HAND MARKETS

- **Flea market**
The first Sunday in every month (from March to October)
Arlon city centre
- **Three-borders second-hand market**
Every third Sunday in the month - Athus
- **Second-hand market in the streets of the village**
In May - Guerlange
- **Amifer Days**
2nd week-end in June - Halanzy
- **In the streets of Battincourt**
1st week-end in August - Battincourt



FOLKLORE

- **Carnival**

In February ou March - Arlon

- **Faaschtebounen (Lent Beans)**

In February ou March - Arlon

- **Easter egg hunt :**

Aubange : Easter monday - Clémarais Estate

Arlon : March or April - Léopold Park

- **"Télévie" Weekend**

In April - Commune of Attert

- **Tontegrange**

In May - Tontelange

- **Nature Park Festival**

In May or June - Commune of Attert

- **Maitrank Festival**

4th week-end in May - Arlon

- **Fair**

In July - Arlon

- **Torchlight procession**

Walk accompanied by stories

In November – Arlon

NATURE

- **Guided country walk**

Third Sunday of every month - Aubange

From March to November

- **Festival International Nature Namur in Arlon**

Exhibition of nature and animal photographs and entertainment

In October/November – Arlon

- **Evening walks and races (in summer)**

Attert : every Thursday evening

Arlon : every Tuesday evening

Messancy : every Wednesday

HERITAGE

- **Les estivales**

Guided tours in summer on different themes

Every Saturday in July and August - Arlon

- **Heritage Days**

Guided tours on the theme of the year

In September - throughout Wallonia



MUSIC

- **Les Aralunaires**

Music festival
In April or May - Arlon

- **Fête de la Musique**

Concerts in the Park and the City Hall
In June - Messancy

- **Fête de la Musique**

Various concerts
In June - Arlon

- **Musical'été**

Open-air concerts every Saturday in July and August - Arlon

- **Donkey Rock Festival**

Music festival
In August - Messancy

- **Musique dans la Vallée de l'Attert**

Music festival
August to October - Attert

- **Remember 44**

Concert of military music
In December - Arlon

OTHER

- **Arlonfolies, shared stage**

Concerts, theater, stand-up, stage performances...
In August - Arlon

- **"1783, Arlon taken by storm"**

Historical reconstitution of the Battle of Arlon (1783) at the Plaine des Manœuvres - Arlon

Every two years

- **"Veni Vidi Orolaunum"**

Gallo-roman weekend

Gallo-Roman entertainment, gladiator fights...
1st weekend in September - Arlon

Every two years



SLEEP

HOTELS

ARLON

Ibis Styles Porte du Luxembourg ***

Drève de l'Arc-en-Ciel
6700 Arlon
+32(0)63 23 22 11
<https://all.accor.com>



Hostellerie du Peiffeschof ***

Chemin du Peiffeschof, 111 - 6700 Arlon
+32(0)63 41 00 50
www.peiffeschof.be

Hôtel Van der Valk **** (ECR)

Route de Longwy, 596 - 6700 Arlon
+32(0)63 23 32 22
www.hotelluxembourg-arlon.be

Appart City Porte de Luxembourg **

Rue Zénobe Gramme, 17 - 6700 Arlon
+32(0)63 24 23 00
www.appartcity.com

AUBANGE

Le Pôle Européen *** (ECR)

Customs and motorway complex - PED
6790 Aubange
+32(0)63 38 01 20
www.hotel-pole-europeen.com

MESSANCY

Les Blés d'Or **

Rue des Blés d'Or, 15 - 6780 Messancy
+32(0)63 22 52 34
www.blesdor.be

GUEST ROOMS

MESSANCY

La Hardie

Rue de la Biff, 42 - 6780 Hondelange
+32(0)471 92 31 31
+352(0)661 434511
la.hardie.42@gmail.com

ATTERT

The Lottert Lodge (ECR)

Chemin de l'Etang, 475 - 6717 Lottert
+32(0)493 32 36 93
www.thelottertlodge.com

GITES

ATTERT

Les Demoiselles de Grendel (ECR)

6717 Attert
+32(0)499 14 21 50
www.gitegrendel.be

La Pausade 🌿🌿

Rue de l'Église, 233 - 6717 Thiaumont
+32(0)489 11 94 08
lapausade@gmail.com

Chez Irma 🌿🌿

Voie des Champs Mêlés, 67A - 6717 Post
+32(0)63 60 15 10
www.chezirma.be

Le Fenil (ECR)

Rue du Koun, 141 - 6717 Nobressart
+352(0) 661 80 95 19

Bois de Loo 🌿🌿

Rue du Bois de Loo, 351B - 6717 Attert
+32(0)63 21 71 29
+352(0)691 44 23 32

ARLON

Comme à la Mer 🌿🌿 (ECR)

Rue du Vicinal, 71 - 6700 Bonmert
+32(0)63 23 50 13
+352 621 43 23 37
www.commealamer.net

MESSANCY

Tiny Messancy 🔑

Avenue de Longwy, 20 - 6780 Messancy
+32(0)479 96 94 92
tinymessancy@gmail.com

Relax & Cook 🌿🌿 (ECR)

Rue de la Halte, 33 - 6780 Turpange
+32(0)63 37 09 46 ou +352 621 184 815
www.relaxandcook.com

CAMPSITES

ARLON

Camping Officiel **

Route de Bastogne 373 - 6700 Arlon
+32(0)63 22 65 82
www.campingofficielarlon.be
Open all year round



www.paysdarlon.be/dormir/

**FOR MORE
INFORMATION,
ASK FOR OUR
ACCOMODATION
AND CATERING
GUIDE AND VISIT
OUR WEBSITE.**

USEFUL ADDRESSES

POLICE

101

ARLON

Rue Joseph Netzer 23 - 6700 Arlon
+32(0)63 60 85 00

AUBANGE

Rue des Usines 5 - 6791 Aubange
+32(0)63 38 02 40

EMERGENCY SERVICES

112

FIRE SERVICE

112

POISON CONTROL CENTRE

+32(0)70 245 245

AIRPORT

Nearest airport :

Luxembourg Airport

www.lux-airport.lu

RAILWAY STATIONS

ARLON **MESSANCY**

ATHUS **AUBANGE**

HALANZY

www.belgianrail.be

TAXIS

• Taxi Schmit

+32(0)63 22 18 97

www.taxi-schmit.be

• Travel Taxi

+32(0)63 23 27 81

BUS SERVICE

TEC : +32(0)81 25 35 35

DOCTORS

Service de garde

1733 ou +32 25249889 (from a foreign phone)

PHARMACIES

Duty pharmacies

+32(0)903 99 000

HOSPITALS

ARLON

Rue des Déportés 137 - 6700 Arlon

VIRTON

Rue d'Harnoncourt 48 - 6762 Saint-Mard

LAUNDRETTES

ARLON

• Raton Lavoir

Grand-Place 2 - 6700 Arlon

• Lavoir Arlon

Rue de Neufchâteau 153 - 6700 Arlon

AUBANGE

• Lavoir Washintown

Rue du Commerce 15 - 6791 Athus

FILLING STATIONS

ARLON

• Esso

Route de Neufchâteau 202 - 6700 Arlon

• Total

Route de Bastogne 382 - 6700 Arlon

MESSANCY

• Shell

Rue d'Arlon 200 - 6780 Messancy



ARLON
 ATTERT
 AUBANGE
 MESSANCY

Maison du Tourisme du **PAYS D'ARLON**

Rue des Faubourgs, 2
 6700 Arlon - BELGIQUE

+32(0) 63 21 94 54
 info@paysdarlon.be

WWW.PAYSDARLON.BE

  Pays d'Arlon Tourisme



Open 7 days a week

- Everyday from **9.30 am to 5.00 pm**
- On Sundays (01/11 > 31/03) from **10.00 am to 2.00 pm**
- Closed on 01/01, 01/11 et 25/12

